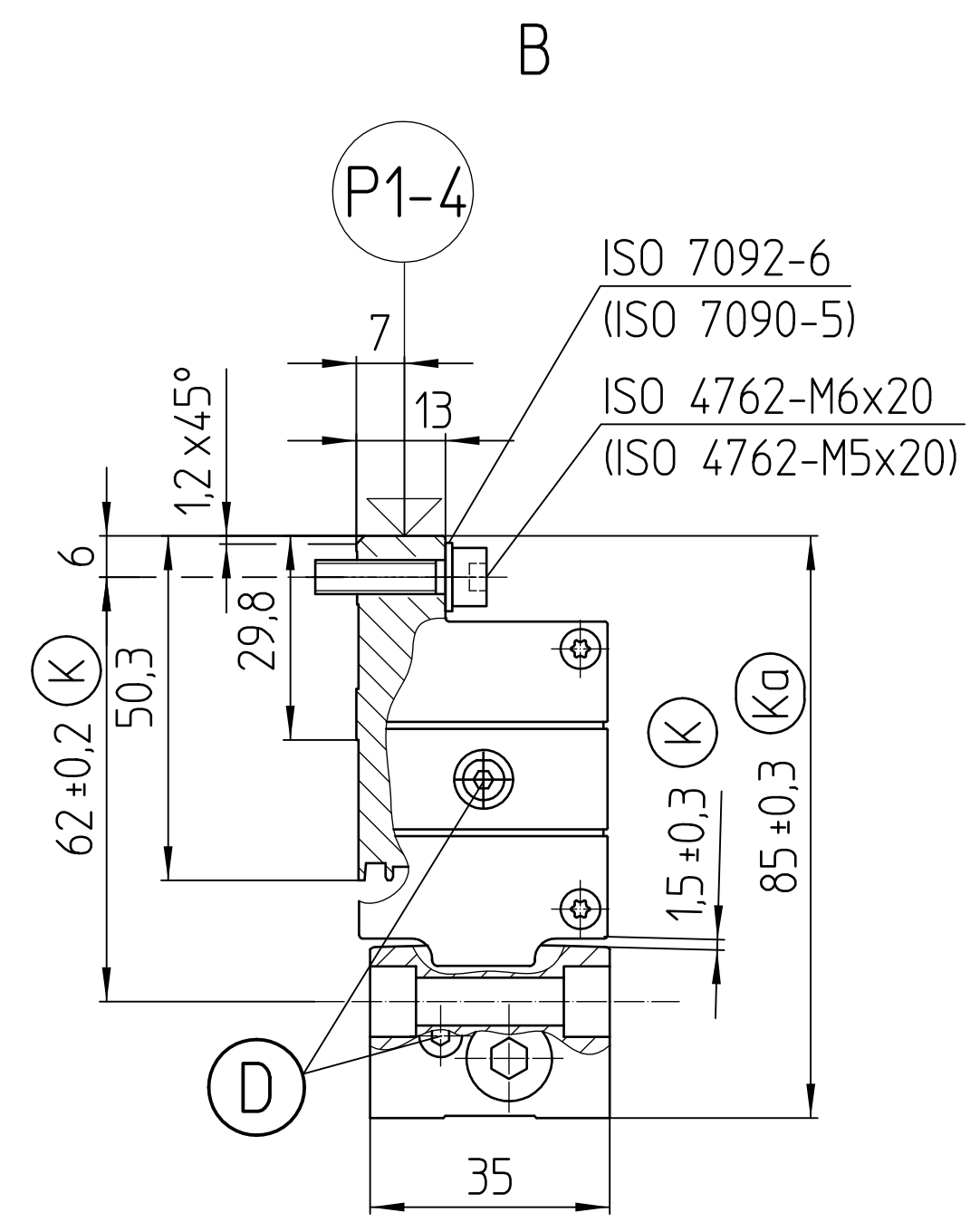
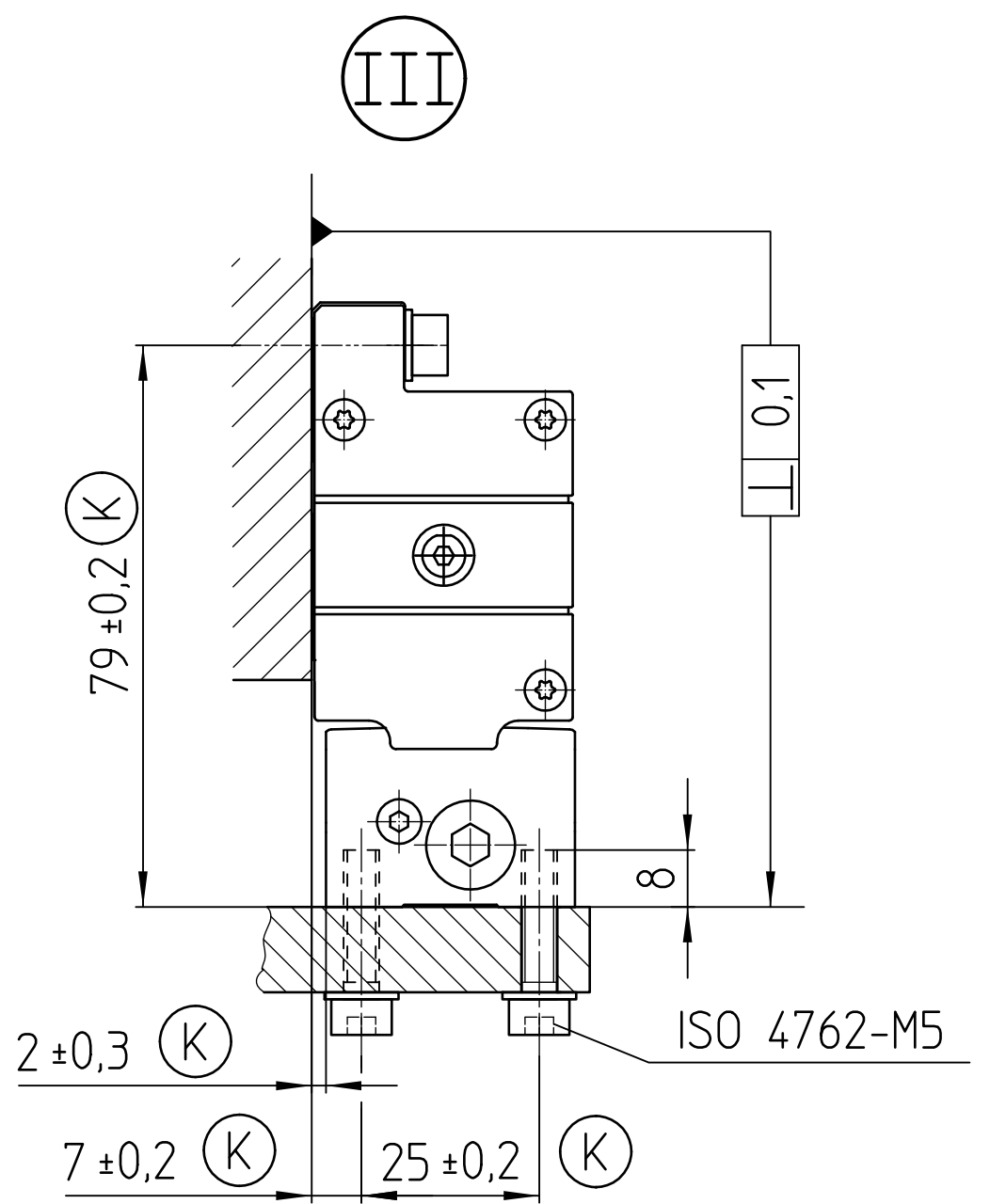
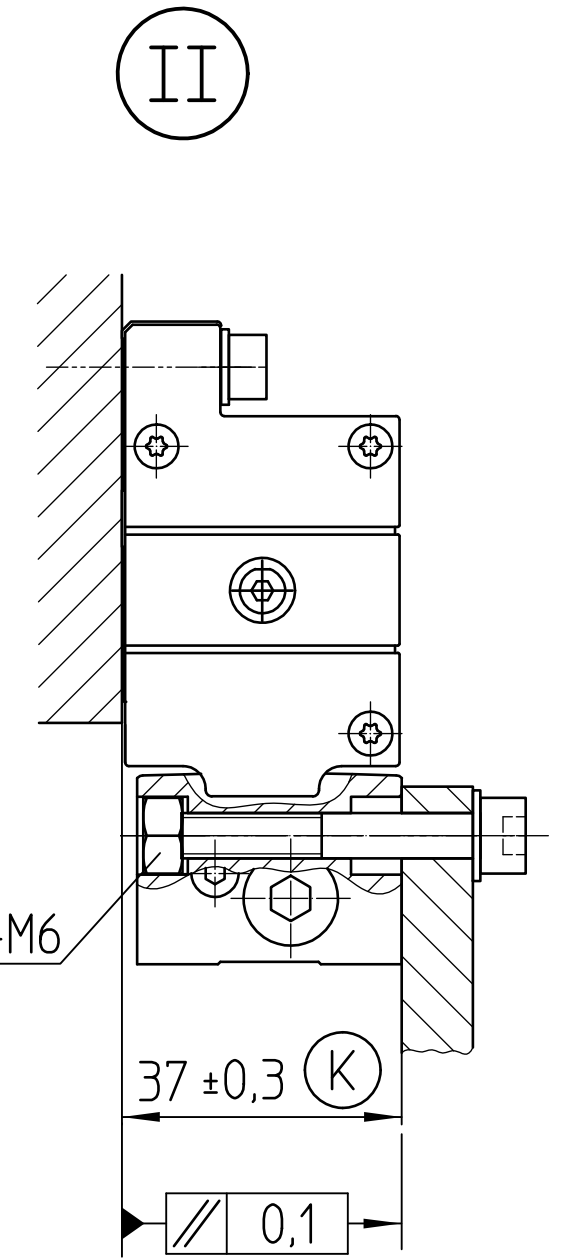
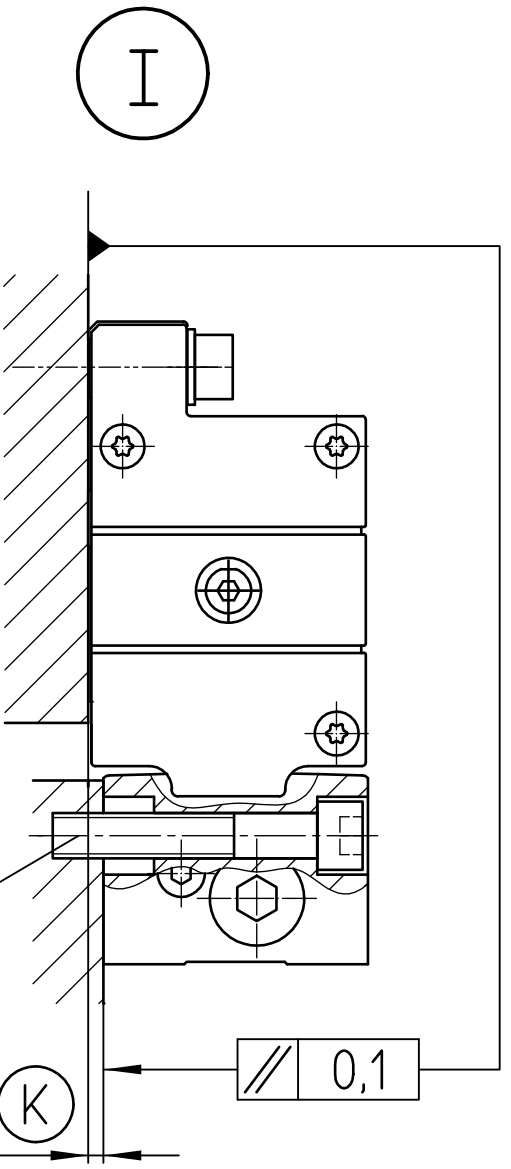


- (I) (II) (III) = Montagemöglichkeiten Mounting possibilities
- F = Maschinenführung Machine guideway
- P = Punkte zum Ausrichten Points for alignment
- R = Biegeradius beachten Notice bending radius
- (K) = Kundenseitiges Anschlussmaß Required mating dimension
- (Ka) = Alternatives kundenseitiges Anschlussmaß Alternative mating dimension
- (D) = Druckluftanschluss Compressed air inlet
- (R) = Referenzmarken-Lage LS 107/ LS 177/ LS 187 Reference mark position LS 106/ LS 176/ LS 186
- (C) = Referenzmarken-Lage LS 107C/ LS 177C/ LS 187C Reference mark position LS 106C/ LS 176C/ LS 186C
- (S) = Beginn der Messlänge ML Beginning of measuring length ML
- (A) = Adapterkabel Adapter cable



ML	P	
≤ 840	P1,P2	Punkte gleichmäßig entlang des Profils verteilen
≤ 1740	P1,P2,P3	Points uniformly distributed along the profil
≤ 3040	P1,P2,P3,P4	

Freigabe-Nr.: 95428		Text: 1x01a: Maß 19+/ -17 in 19+/ -2,0		Identnummer	
Toleranzen: ISO 2768-mH <6mm: ±0,2		LS 177/177C/187/187C Anschlussmaße		 DR. JOHANNES HEIDENHAIN GmbH D-83292 Traunreut. Tel. 1086691-31-0	
Tolerierung nach DIN ISO 8015	Original Maßstab Format	Erstellt Name	Verantwortlich Schulter	Freigegeben Abel-Kell.	Version Revision Blatt Seite
	1:1 A1	Datum	11.02.2008	11.02.2008 31.03.2008	D 530295 - 01 - A - 01